

100 Participants and \$5,000,000 in Assets

Chart 12.1b

Average Plan Cost as a Percentage of Assets
(Illustrating Revenue Sharing Allocation to
Advisor Compensation and Recordkeeping Administration)

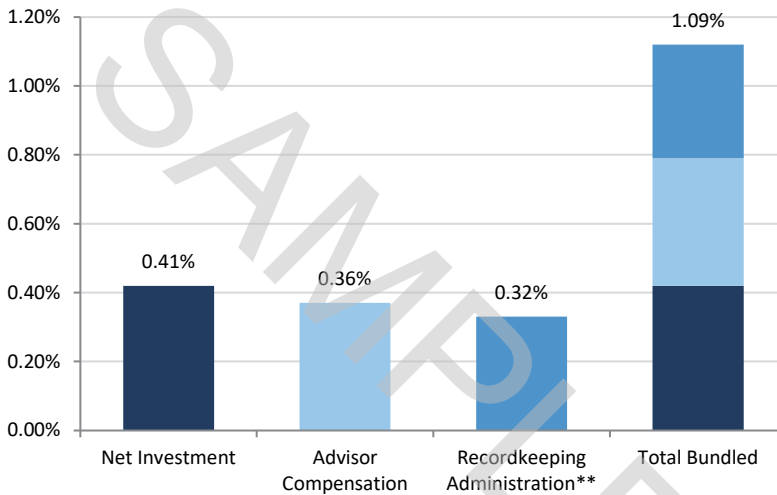


Chart 12.2
Range of Advisor Compensation

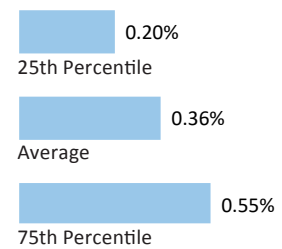
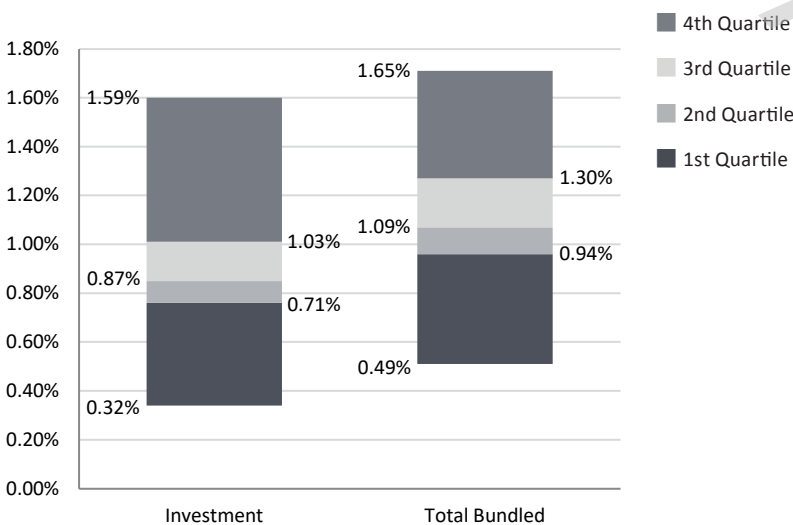


Chart 12.3

Investment and Total Bundled Cost Quartiles



** Hard dollar and asset based recordkeeping fees and any allocation to recordkeeping from revenue sharing